



**Welcome to the Department of
Management and International
Business**

Spring 2021 Issue (NO 2)

Newsletter



1 - Department Chair/Professor

Lam D. Nguyen, D. Mgt. | lnghuyen@bloomu.edu

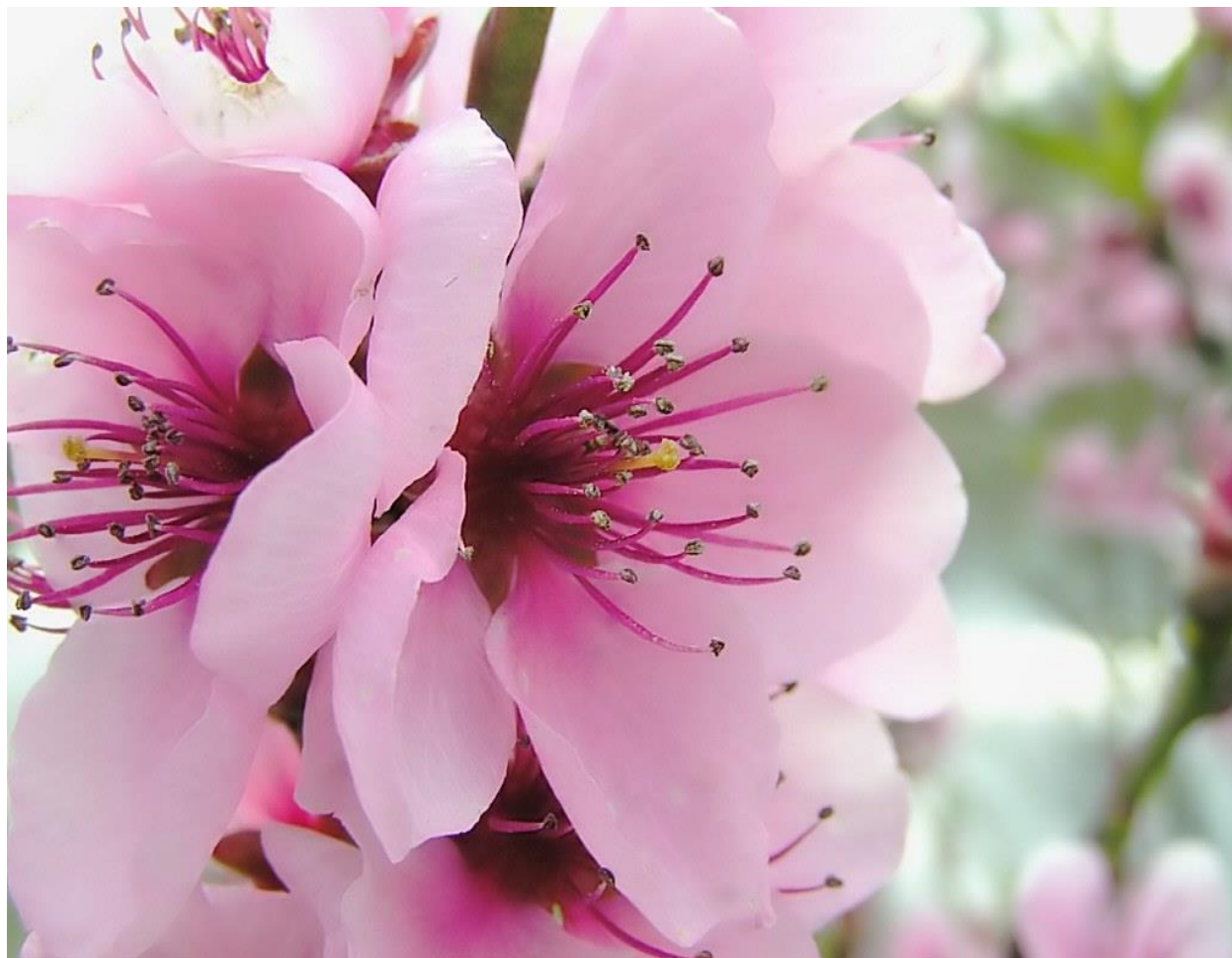
Sutliff Hall 358 | (570) 389-4386

Department Secretary

Mike Golubiewski | mgolubiewski@bloomu.edu

Sutliff Hall 356 | (570) 389-5325

Spring 2021



In the 2021 spring issue, the department's newsletter committee interviewed one faculty member, **Dr. John Grandzol**, who is going to retire this summer. In addition, we also created a special issue for the **five student clubs**, introducing their club officers and faculty advisors. Finally, **faculty scholarship** was also highlighted.

Dr. John Grandzol is going to retire from the BU in Summer 2021



<https://sway.office.com/yAZtDZ18cKASQFRf#content=lmZ1pacjKlmwtx>

2 - John Grandzol, professor of Management, has significant academic and professional experience in operations and supply chain management. His graduate degrees in management science and operations management from Temple University developed his skills in quantitative methods and applied business models, while his professional experience in US Navy supply and logistics led to interest in decision models, business processes, and quality management as foundational business paradigms. He chaired the College's Interdisciplinary Supply Chain Management Design Team. Grandzol designed several of the required courses, facilitates software integration, and coordinates all activities related to Supply Chain academic programs. He is a senior fellow of the American Society for Quality and holds certifications as Manager of Quality/Organizational Excellence and Supplier Quality Professional. John is a two-time recipient of the university's outstanding teaching award.

Student Clubs



Five student clubs meet regularly and actively in the Department of Management and International Business.

1. **Society of Human Resource Management (SHRM),**
2. **Society for Advancement of Management (SAM),**
3. **Association for Supply Chain Management (ASCM),**
4. **Global Business Association (GBA), and**
5. **Real Estate Investment Club (REIC).**

Society for Human Resource Management (SHRM)



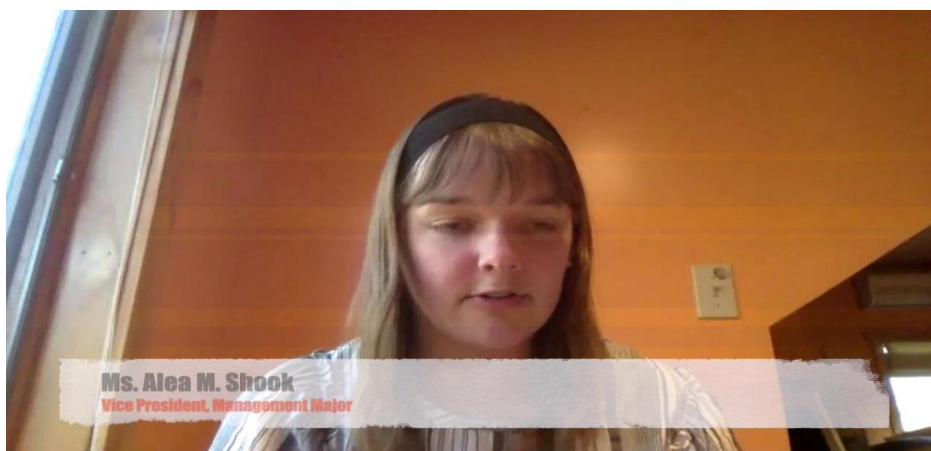
3 - SHRM - BU Chapter

The mission of the Society for Human Resource Management (SHRM) is to: 1) To provide Bloomsburg University students with the opportunity to gain knowledge and insight into the effective management of human capital in the field of Human Resource Management through affiliation with the National SHRM organization; 2) To promote the exchange of work-related experience of established business professionals with the theoretical academic perspectives of students and faculty members through open forums and information exchanges; 3) To encourage the acquisition, growth and continuation of our respective careers in Human Resource Management through expanded knowledge, camaraderie, respect and mutual support among chapter members and through our affiliation with national, sponsoring and other student chapters; and 4) To achieve these purposes, there shall be no discrimination in individual membership or chapter affiliations because of race, religion, sex, age, disability, sexual orientation or national origin.

Faculty Advisors:

Dr. Wai Kwan (Elaine) Lau; Email: wlau@bloomu.edu

Dr. Weichun Zhu; Email: wzhu@bloomu.edu



<https://sway.office.com/yAZtDZ18cKASQFRf#content=s7wOtr9C1wCHZi>

4 - Interview with SHRM Student Chapter at Bloomsburg University.

Jessica Gacsi (President), Aleah M. Shook (Vice President), Abigayle Hunt (Treasurer), Jordan Parcell (Secretary) and Dr. Weichun Zhu (Faculty Advisor) joined Dr. Steven Welch (Interviewer).

Society for Advancement of Management (SAM)



SAM

Society for Advancement of Management

5 - [SAM - BU Chapter](#)

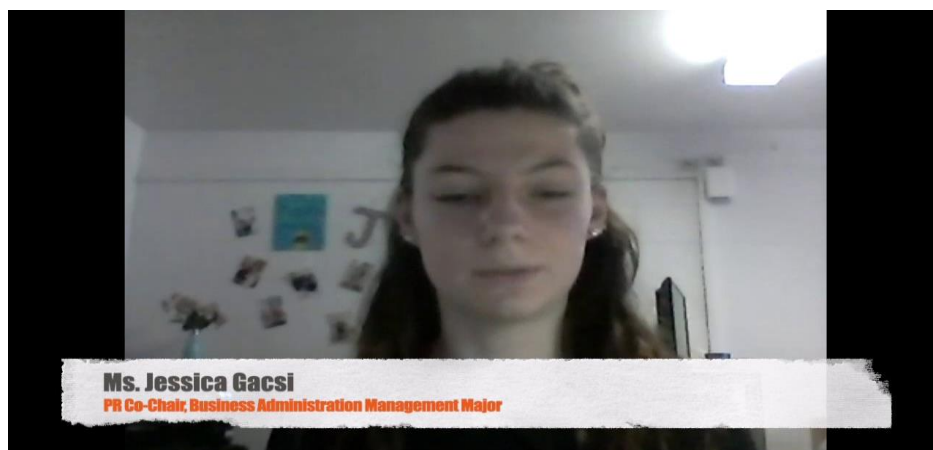
The purpose of Society for Advancement of Management (SAM) is to provide an opportunity for students to increase management skills and expertise through participation in various programs and services designed to improve the professional quality of their knowledge, performance, and leadership ability.

- *Promote unity and a sense of belonging between members through various open discussion forums.*
- *Conduct activities with intentions of spreading management knowledge and skills.*
- *Promote the application of management skills on a day-to-day basis.*

Faculty Advisors:

Dr. Jet Mboga; Email: jmboga@bloomu.edu

Dr. John Okpara; Email: jokpara@bloomu.edu



<https://sway.office.com/yAZtDZ18cKASQFRf#content=hnQZl7XRf1clYq>

6 - Interview with SAM Student Chapter at Bloomsburg University.

Daniel Prunzinsky (President), Tanner Vandermark (Treasurer), Hannah Lare (PR Co-chair), Jessica Gacsi (PR Co-Chair), and Dr. Jet Mboga (Faculty Advisor) joined Dr. Sam Choi (interviewer).

Association for Supply Chain Management (ASCM)

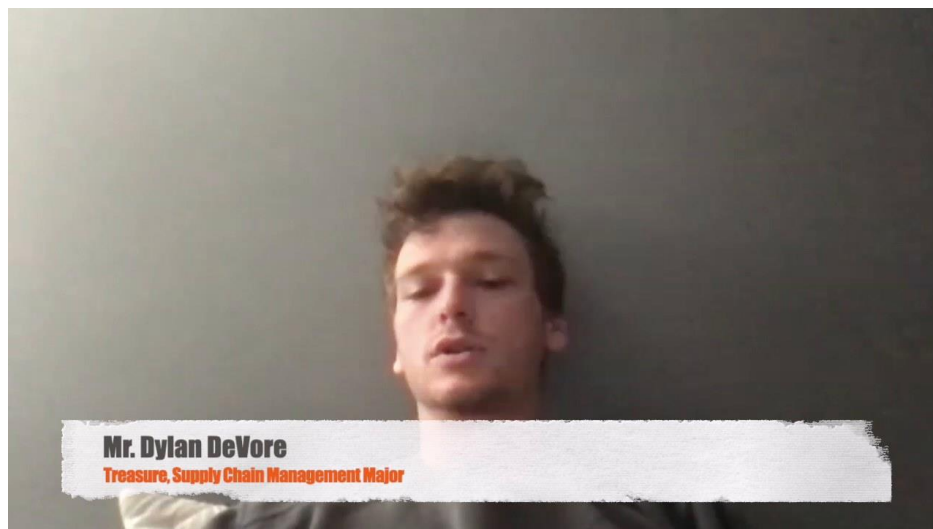


7 - [ASCM - BU Chapter](#)

Association for Supply Chain Management (ASCM) mission is to bring current knowledge of the supply chain field to students, augment classroom learning, and develop leadership skills. ASCM Chapter offers multiple opportunities for experiential learning, such as manufacturing and distribution center facility tours. We also engage in extensive networking with industry professionals, host learning simulations, and prepare for professional certifications.

Faculty Advisor:

Dr. Christian Grandzol; Email: cgrandzol@bloomu.edu



<https://sway.office.com/yAZtDZ18cKASQFRf#content=1c3yhLRR5iQFXd>

8 - Interview with ASCM Student Chapter at Bloomsburg University.

Kiana A. Brubaker (President), Michael Ragusa (VP-Education), Lauren Stenson (VP-Membership), Gabriella DiNardo (Secretary), Dylan DeVore (Treasurer), and Dr. Christian Grandzol (Faculty Advisor) joined Dr. Sam Choi (Interviewer).

Global Business Association (GBA)



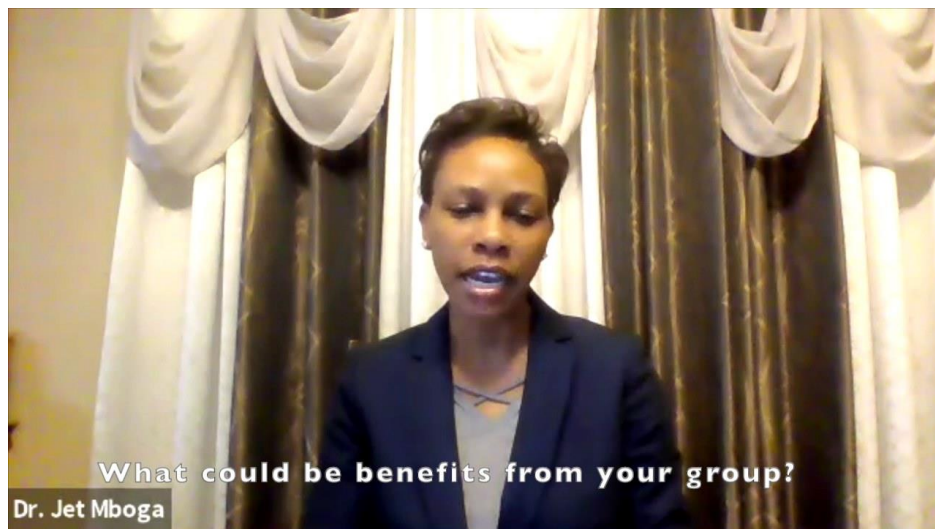
9 - [GBA - BU Chapter](#)

The purpose of the Global Business Association is to assist students in becoming more aware of cultural diversity and globalization and understanding the importance of business beyond national border, promote cultural awareness and diversity on campus, and organize activities and events that advance the professional development of those who are interested in international business.

Faculty Advisors:

Dr. Lam Nguyen; Email: lnguyen@bloomu.edu

Dr. Wai Kwan (Elaine) Lau; Email: wlau@bloomu.edu



<https://sway.office.com/yAZtDZ18cKASQFRf#content=Kt2Qd3yUicwOTu>

10 - Interview with GBA BU Chapter

Real Estate Investment Club (REIC)

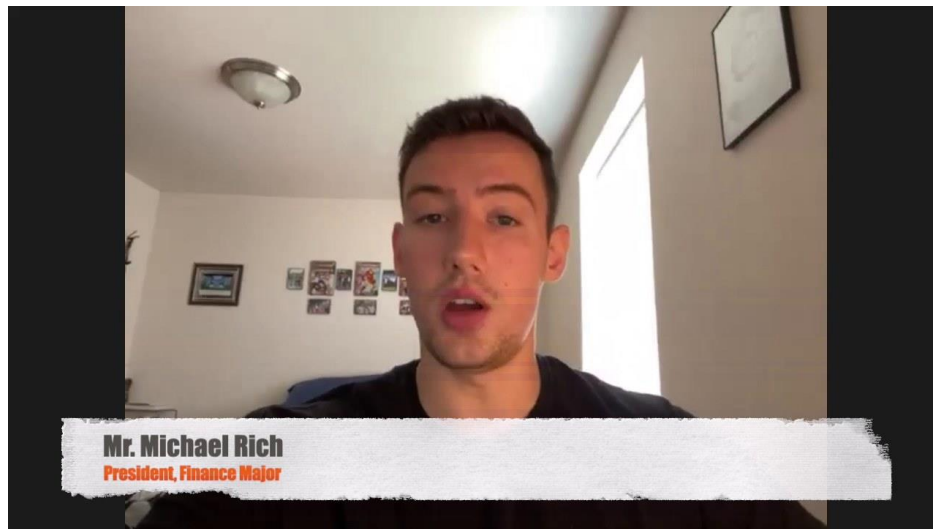


11 - [Real Estate Investment Club \(REIC\)](#)

The Bloomsburg University's Real Estate Investment Club (REIC) exists to effectively teach, mentor, guide, and explore more opportunities about the steps and procedures to get a foot in the door and introduce students to the world of Real Estate. Through interactive meetings, members learn with each other about how to properly execute renting, wholesaling, renovation, and more. Whether it is financial independence or a desire to do what one loves, REIC strives to push members to reach their goals in any field.

Faculty Advisor:

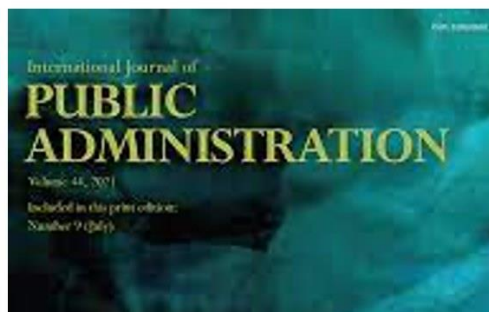
Dr. Steve Welch; Email: swelch@bloomu.edu



<https://sway.office.com/yAZtDZ18cKASQFRf#content=45vP6qHa9daXbL>

12 - Interview with Real Estate Investment Club

Scholarship Highlights



13 - Dr. Nguyen has a paper accepted for the publication. Citation: Tran, Y.T., Nguyen, N.P., & Nguyen, L.D. (2020). Results-oriented culture and organizational performance: The mediating role of financial accountability in public sector organizations in Vietnam. International Journal of Public Administration. DOI:10.1080/01900692.2020.1841227.



14 - Dr. Nguyen is recognized as 2020 Career Champions by two of his students, Nakeisha Frederick (MBA '21), and Carolyn Benner (IB/Management '21) <https://vimeo.com/showcase/careerchampions2020?page=5>



15 - Jang, H. (2021), *Online Higher Education Module under Emergent Situations and in Remote Areas*, Presented at the Northeast Decision Sciences Institute 50th Annual Conference 2021.

Jang H. et al. (2021), *Toward the Measurement of Green Tourism*, Presented at the Northeast Decision Sciences Institute 50th Annual Conference 2021.



16 - S. Choi et al. (2021), *What happened for the last three decades? - Inventory Analysis in the Pharmaceutical Industry*, Presented at the Production Operations Management Society 31st Annual Conference.

S. Choi et al. (2021), *Global Supply Chain Analysis of Medical Device Industry: 30 Year Longitudinal Study*, Presented at the Production Operations Management Society 31st Annual Conference.

Contact Us



[Bloomsburg University of Pennsylvania](#)

[Zeigler College of Business](#)

[Department of Management & International Business](#)

400 E. 2nd St., Bloomsburg, PA 17815

Visit us on the web at <https://bloomu.edu/management-international-business>

Department Specifics:

[Management: https://www.bloomu.edu/management](https://www.bloomu.edu/management)

[International Business: https://www.bloomu.edu/international-business](https://www.bloomu.edu/international-business)

[Supply Chain: https://bloomu.edu/scm](https://bloomu.edu/scm)

[Department Directory: https://intranet.bloomu.edu/mib-faculty](https://intranet.bloomu.edu/mib-faculty)

[Visitor Analytics](#)